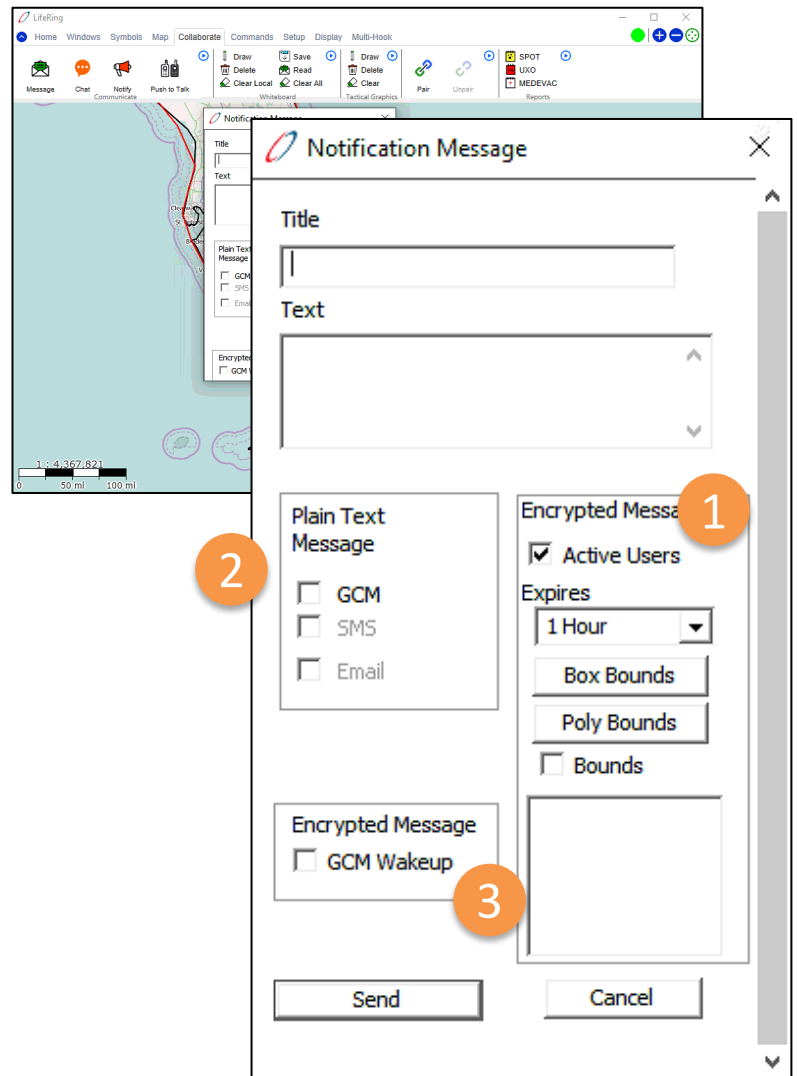


Coming Soon! LifeRing's 5.08 Enhanced Notification Function

The LifeRing NOTIFY function allows the LifeRing PC to send notifications to large groups of users. The recipients of the notifications can be chosen by either all current active users or by selecting a boundary that includes all users inside of it. Box Bounds and Poly Bounds permit you to define an area on your screen and to send a notification to all users that are geographically located inside that area.

Three types of notifications can be sent:

1. You can select to send the notification to all active LifeRing Users. The data entered in the Text Box is sent using normal LifeRing Messages. If a LifeRing user has intermittent comms, the message is temporally held until the user reconnects to the Server.
2. You can select to send a GCM Plain Text Message. The text message is then sent, via GCM, to every handset that has ever connected to this LifeRing Server. The message is sent using GCM Android and iOS notification technology and will be received if the recipient's Smartphone is active or when it is turned on.
3. You can select to send an encrypted GCM LifeRing Wakeup notification to users not currently running LifeRing. It is received by Android and iOS Smartphones and is labeled "Priority Message." Once the recipient taps on the Notification, LifeRing is automatically launched.



Go to www.agisinc.com/download and register to get your copy of LifeRing 5.08 as soon as it is released.

LifeRing – Complete, Affordable C4I Everywhere!

To download a Thick Client evaluation copy of LifeRing, go to: www.agisinc.com/download or email us at support@agisinc.com. All other inquiries, please contact Jason A'Hearn jahearn@agisinc.com or Cap Beyer at beyerm@agisinc.com or by phone at 561-744-3213.



Developed in the USA by American Citizens

