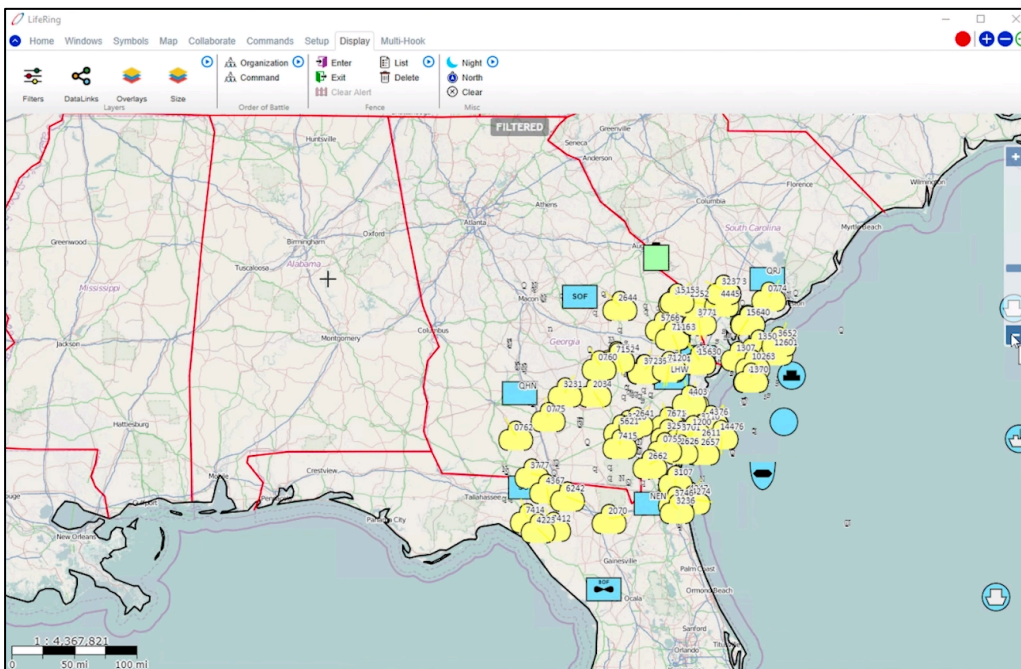




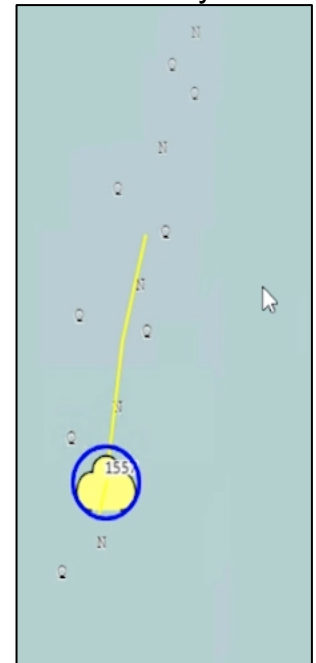
REAL! Real time processing of Vast amounts of Sensor Data

Simultaneously with processing the COP, AGIS' LifeRing processes ELINT, SIGINT, Radar and other sensors in real time and processes 100's of sensor returns from each of multiple sensors every second. To demonstrate this capability, at the unclassified level, we recorded LifeRing processing reports from 5 radars each of which are simultaneously transmitting many 100's of uncorrelated data reports (weather, birds, mountains, etc.) every 10 seconds.

Over 100 Aircraft and 1,000's of Noise reports at 10 second rate



Individual aircraft
with history trail



As noted, much of the received data is erroneous noise. LifeRing uses several processing algorithms that make automatic determinations that reject this noise data and only then applies an AGIS sensor algorithm to the remaining data to create track symbols which have speed and heading and, if available, altitude.

The track symbols are then assigned a Track Number that is used to uniquely identify each track. The tracks with their associated Track Number are then transmitted using the correct protocol and format (Link -16, JVMF, OTH Gold, CoT, NFFI, ADEM, NVG, MDDL, etc.) to the interfacing C4I systems.

To view a demo of this processing, click on: <https://www.youtube.com/watch?v=6l8cBeoHVv0>

LifeRing – Complete, Affordable C4I Everywhere!

To try the LifeRing web client click on: www.liferingmilitary.com or www.liferingfirstresponder.com.

To download a Thick Client evaluation copy of LifeRing, go to: www.agisinc.com/download or email us at support@agisinc.com.

All other inquiries, please contact Jason A'Hearn jahearn@agisinc.com or Cap Beyer at beyerm@agisinc.com or by phone at 561-744-3213.



Developed in the USA by American Citizens

