

*Wishing you a very*  
**MERRY CHRISTMAS**



**C.O.P. NEWS**

**COMMON OPERATIONAL PICTURE**

VOLUME 2, ISSUE 6 NOV – DEC 2016

## MEET THE NEW LIFERING

Our latest version of LifeRing is a leap forward in usability and user experience design. We've integrated Google maps so all users have a common display they are familiar with using. Menus and information screens are all available with a swipe of the finger for a faster, more intuitive experience.

*A few of the new features include:*

### GOOGLE MAPS

Integrated Google Maps

### STACKED SYMBOLS

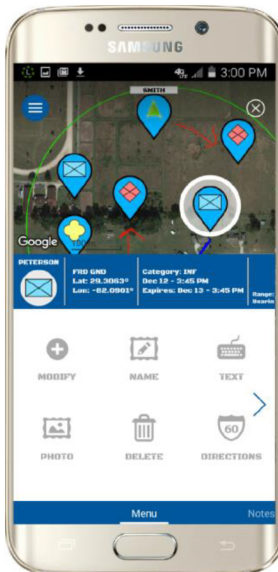
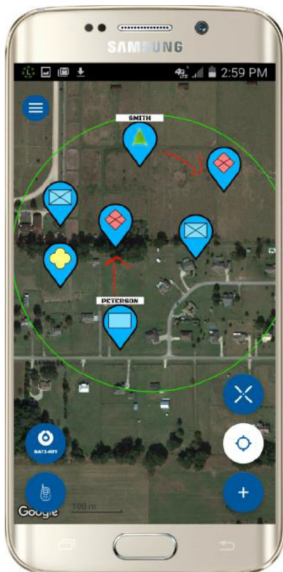
Multiple symbols in the same location will show as one symbol with the number of users

### NEW BUTTONS

Short cut buttons are all within reach

### PUSH-TO-TALK

One-touch Push-To-Talk functionality and different groups selection available



### COMPACT MENU BAR

Redesigned display of function and status symbols

### FINGER TIP CONTROLS

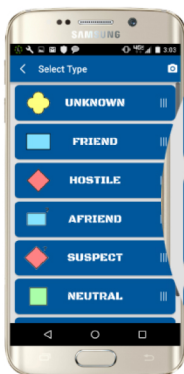
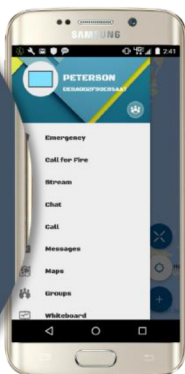
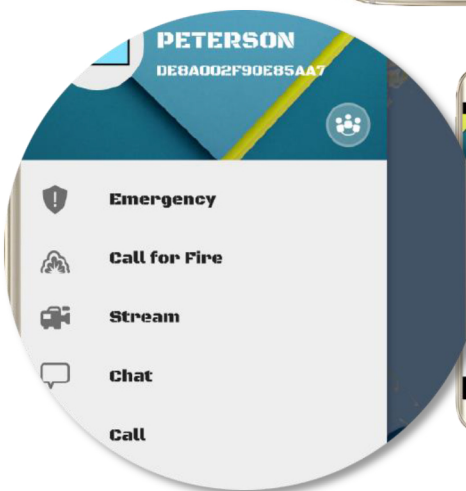
Ability to zoom in/out and pan with your fingertips

### DETAIL READOUT

Expanded display of marker/user data

### USER PROFILE

Swipe up to display user info screen and communication tools



**LifeRing Puts A Tactical Operations Center In The Palm Of Your Hand!!**

If you are interested in receiving download instructions for our latest version of LifeRing contact: Michelle Morris

Phone: 561-744-3213

email: [mmorris@agisinc.com](mailto:mmorris@agisinc.com)

web: [www.agisinc.com](http://www.agisinc.com)

